



Cisco rack system has provides a wide variety of server rack, Server Cabinets, Wall Mounts, Cooling Solutions, and Server Rack Accessories for the Datacom and Telco industries.



**CISCO<sup>®</sup>**

## FABRICATION MACHINERY

With the expertise and fabrication machinery we have developed over time, we offer a range of variety RACK SYSTEM products of DATA CENTER and support components.



Laser Cutting Machine



CMM Test Machine



Salt spray corrosion test chamber

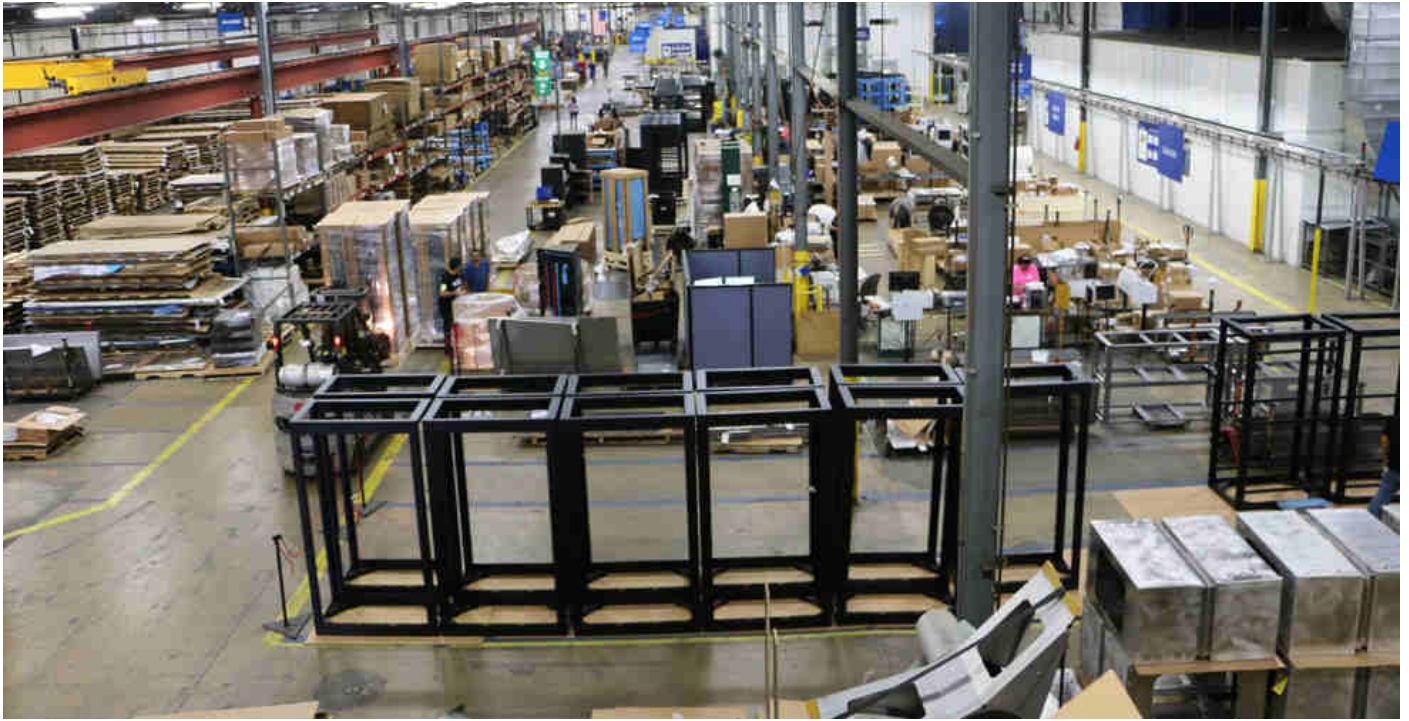


Robot Welding Manipulator



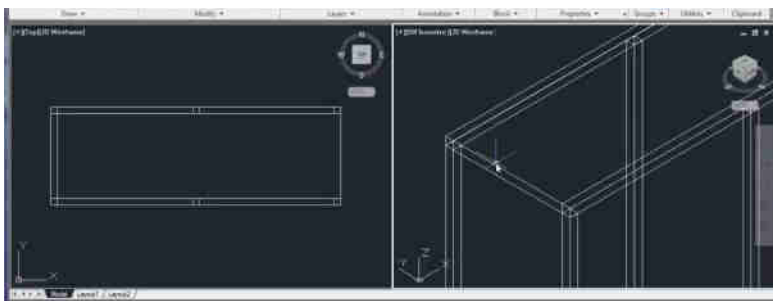
High Velocity Ram Machine





CISCO RACK SYSTEM is an industry leader in providing the ICT Racking solutions and is committed to the modular data center integrated solutions as well as the product development, production, sales, consultation, design, implementation, operation and maintenance services. With its own brand of system products, including the cold aisle containment systems, fast-termination structured cabling systems, intelligent power supply and distribution systems, cooling systems and integrated management platform systems.

## RESEARCH & DEVELOPMENT



AMPNET independently researched and developed mini smart data center with integrated and combined cabinets are with advantages of environmental protection, high efficiency, energy saving and many other advantages, which completely changed the state of traditional mini machine rooms. The company actively explores the Indonesia market, and cooperates with the major international operators and the upstream and downstream industry chain companies of data centers to complete global promotion of independent brands. Taking technological innovation as the engine, market as the orientation and meeting the needs of customers as the goal, the company focuses on the technology field of data centers to promote the high integration, upgrade and transformation of data center industries and create a good operation environment of big data.

PRODUCT DESCRIPTION

CISCO CS Series is a high quality server rack specifically designed to maximize the placement and maintenance of IT network devices. This server rack is equipped with air circulation system so that it can optimize the performance of electronic devices in it to work optimally. This server rack is very suitable to be applied for IDC (International Data Corporation) or Data Center of a company



DOUBLE INTERLOCKING SIDE DOOR



EQUIPMENT HEIGHT MEASUREMENT (U-MARK)



2 INSTALLED AND 2 OPTIONAL FAN



2 DIRECTION DOOR OPEN



HEAVY DUTY CASTOR



GROUNDING CONNECTOR



VERTICAL CABLE MANAGEMENT



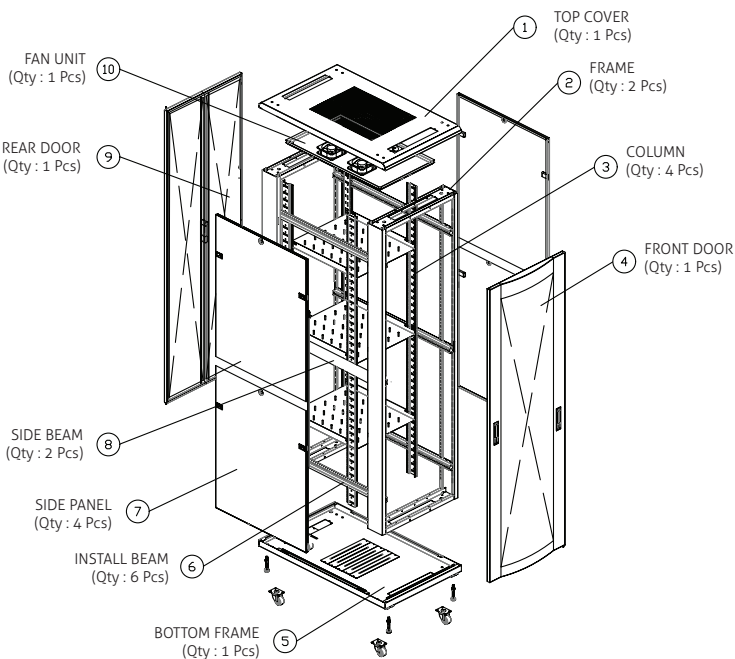
TOP AND BOTTOM CABLE ENTRY

MODEL

| Part No.           | Capacity | Width(mm) | Depth(mm) | Height(mm) |
|--------------------|----------|-----------|-----------|------------|
| CS32-612-BLK       | 32U      | 600       | 1200      | 1600       |
| CS42-608-BLK       | 42U      | 600       | 800       | 2000       |
| CS42-612-BLK       | 42U      | 600       | 1200      | 2000       |
| 007-CSSE-81142-001 | 42U      | 800       | 1200      | 2000       |
| 007-CSSE-81145-001 | 45U      | 800       | 1200      | 2133       |

FEATURES

- Mounting cabinet structure static load bearing 1500 KG
- Front rear high density mesh perforated door, enhance airflow, reduce cabinet power consumption• Sectionalside door with interlocks could open independently easy for maintenance
- Sectional type side door(with interlock), open separately, easy for maintenance
- Top side tool-less installation, easy for dismounting and maintenance
- Cabinet active component and frame earth connection
- Cabinet surface adopted static painting treatment, adapt all kinds of environment





# WALLMOUNT DOUBLE DOOR

CISCO<sup>®</sup>



9U Cabinet



12U Cabinet



15U Cabinet

## PRODUCT DESCRIPTION

CISCO CW series is a standard 19 inch professional wall mounted cabinet which has abundant functions and flexible operation. It could provide proper and stable environment for small equipments, widely used in structured cabling and intelligent buildings.



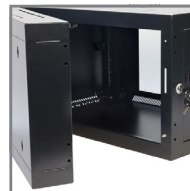
LOCKING GLASS  
FRONT DOOR



REMOVEABLE  
SIDE PANEL



ADJUSTABLE  
STRIP



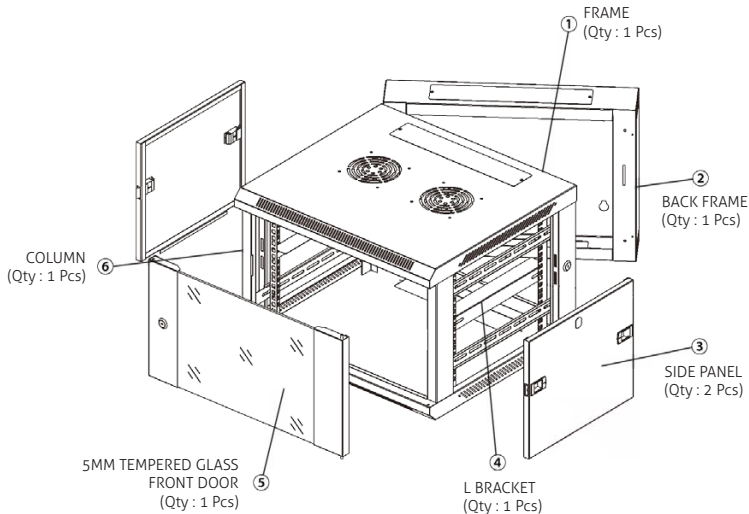
LOCKING SOLID  
REAR DOOR

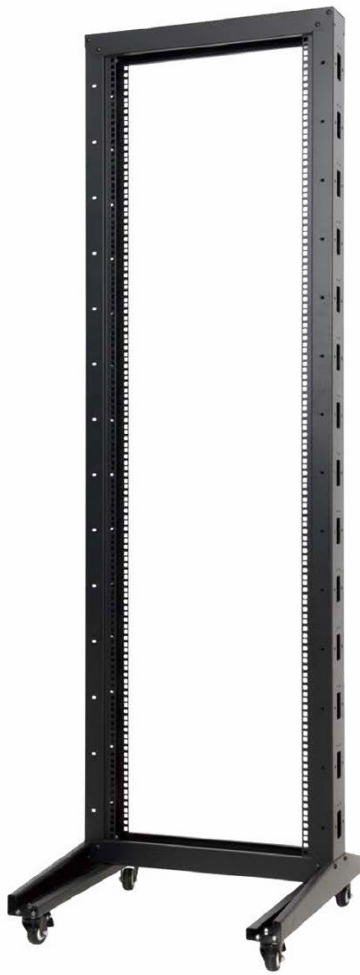
## MODEL

| Part No.     | Capacity | Width(mm) | Depth(mm) | Height(mm) |
|--------------|----------|-----------|-----------|------------|
| CW09-606-BLK | 9U       | 600       | 600       | 502        |
| CW12-606-BLK | 12U      | 600       | 600       | 635        |
| CW15-606-BLK | 15U      | 600       | 600       | 768        |

## FEATURES

- Standard 19" wall mounting cabinet overall welding structure, static load bearing 60kg
- Accessible rear section, easy for rear cabling and daily maintenance
- Quick and convenient wall mounted installation design, support feet or truckles optional for ground installing
- Accessible side panel, convenient operation
- Top rear side has cabling channel, support wiring and structured cabling
- With U mark installation column, adjustable sign, column accurate adjustment





## PRODUCT DESCRIPTION

CO series is a standard 19inch flexible single column rack, which could satisfy the use of Easy Installation, Easy Maintenance, Easy Organization, Unrestricted Air Flow and Lower Cost.



COLUMN  
INSTALLATION



EQUIPMENT HEIGHT  
MEASUREMENT (U-MARK)



HEAVY DUTY CASTOR



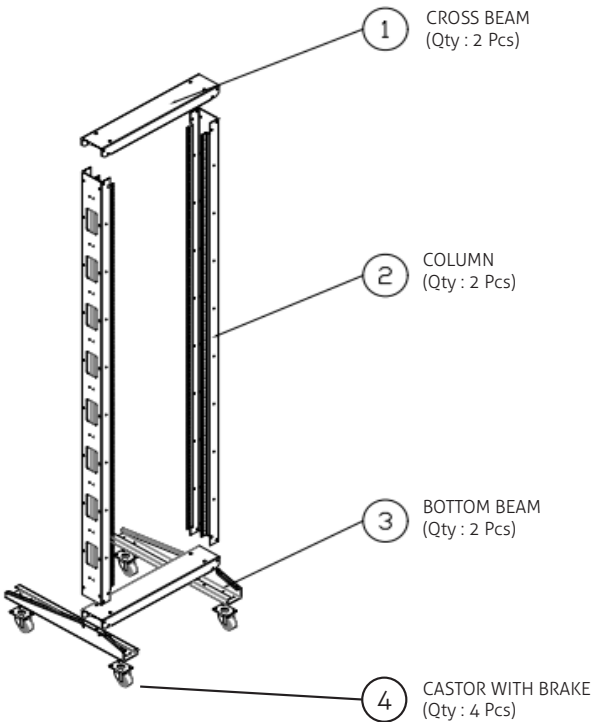
6 PORT HORIZONTAL  
POWER DISTRIBUTION  
UNIT

## MODEL

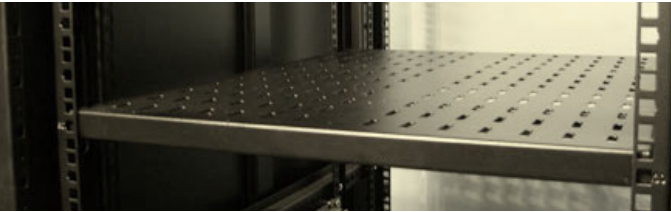
| Part No.     | Capacity | Width(mm) | Depth(mm) | Height(mm) |
|--------------|----------|-----------|-----------|------------|
| CO32-606-BLK | 32U      | 600       | 600       | 1625       |
| CO42-606-BLK | 42U      | 600       | 600       | 2070       |

## FEATURES

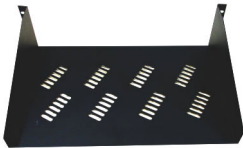
- Standard 19" rack, assembled structure, static load bearing 160KG.
- Quick and convenient installation design.
- With brake type truckles, moving flexible, safe and reliable.
- With U mark installation column, with adjustable sign, column accurate adjustment.



RACK SHELVES



Server rack shelves have been specifically designed to fit in 19" server cabinets. The racks are easily adjustable with some shelves vented to allow for airflow, helping to cool any equipment down that might be prone to over-heating. Heavy duty shelves are also available and are able to hold more weight than a cantilever shelf. A shelf is measured by using rack units (U or RU) and is defined as 44.5 mm (1.75 in).

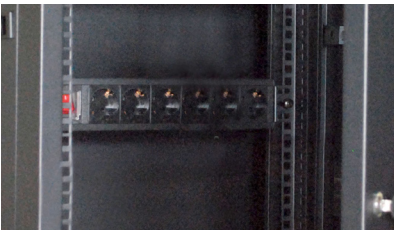


| Part No.     | Desc.       | Depth(mm) | Load(Kg) |
|--------------|-------------|-----------|----------|
| CFS-735-BLK  | Fixed-Shelf | 350       | 70       |
| CFS-755-BLK  | Fixed-Shelf | 550       | 70       |
| CFS-775-BLK  | Fixed-Shelf | 750       | 70       |
| CFS-1290-BLK | Fixed-Shelf | 900       | 120      |



| Part No.    | Desc.         | Depth(mm) | Load(Kg) |
|-------------|---------------|-----------|----------|
| CSS-300-BLK | Sliding-Shelf | 300       | 40       |
| CSS-550-BLK | Sliding-Shelf | 550       | 40       |

POWER DISTRIBUTION UNIT



A power distribution unit (PDU) or mains distribution unit (MDU) is a device fitted with multiple outputs designed to distribute electric power, especially to racks of computers and networking equipment located within a data center.

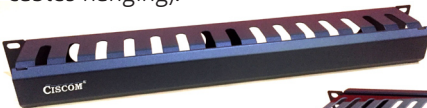


| Part No.      | Desc.                                    | Port | Lenght (M) | ac Max.    |
|---------------|--|------|------------|------------|
| CPD-0616-H220 | Horizontal w/switch, German Standard     | 6    | 3          | 16A 220Vac |
| CPD-1216-V220 | Vertical w/switch, German Standard       | 12   | 3          | 16A 220Vac |
| CPD-1220-V380 | Vertical w/switch, Industrial Power Plug | 12   | 3          | 20A 380Vac |

CABLE MANAGEMENT



We offer a wide range of cable management solutions that make it easy to keep the cabling in your server rack tidy (Don't leave your cables hanging).



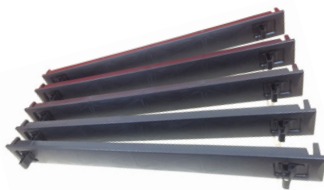
| Part No.    | Desc.                               | Dimension | Remark |
|-------------|-------------------------------------|-----------|--------|
| CMM-1U-H    | Plastic Cable Management with Cover | 1U        | 19"    |
| CCM-M1U-BLK | Metal Cable Management with Cover   | 1U        | 19"    |

PANEL



Snap-in Blank Panel

By installing snap-in blanking panels you can keep cool air from bypassing equipment and mixing with hot exhaust air, immediately improving cooling efficiencies for a modest investment.



| Part No. | Desc.               | Dimension | Remark |
|----------|---------------------|-----------|--------|
| CBP-1U-H | Plastic Blank Panel | 1U        | 19"    |

EXHAUST AIR COOLING FAN



Fan

| Part No.     | Desc. | Voltage | Dimension    |
|--------------|-------|---------|--------------|
| CFU-ACDC-220 | Fan   | AC220V  | 120X120X38mm |

Keeping your network equipment cool under controlled airflow is a necessity.





# DTCT SMART RACK



Coded lock

Enclosed cabinet

Collector

Battery pack

Emergency cooling devices

Network patch panel

7 inch touch screen

Network switch

Server

RAM

Power distribution unit

UPS

AC





EN-A Single Cabinet



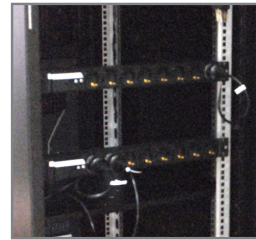
EN-C Single Cabinet

## PRODUCT DESCRIPTION

CISCO Edge N green smart data room mini data center are safe, stable, reliable, flexible, and highly efficient. One integrated cabinet is a network data center, providing safe, reliable, intelligent management and energy-saving operation place and environment for information equipments.



DOOR EMBEDDED A/C



DUAL PDU OUTLET



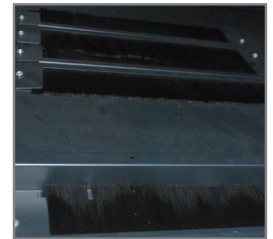
POWER SUPPLY MODULE



SMOKE DETECTOR



DIGITAL TEMP. DISPLAY



BRUSHED CABLE ENTRY

## FEATURES

- Front door embedded cooling module, maximum cooling capacity 1kW (\*)
- In-Row cooling module, maximum cooling capacity 1kW up to 2kW (\*\*)
- Uninterruptible power supply module 1KVA/800W (\*) up to 2KVA/1.6KW (\*\*).
- Embedded DCIM host to realize remote centralized management of environment and infrastructure equipment in the cabinet, support SMS & Email alarm function, achieve 7x24 hours unattended (\*)
- Intelligent management module: 7 inch intelligent touch screen realizes the local management of environment and infrastructure of the cabinet (\*)

## MODEL

| Part No.              | Capacity | Width(mm) | Depth(mm) | Height(mm) |
|-----------------------|----------|-----------|-----------|------------|
| *CEN-0101G1-1R6042E   | 39U      | 600       | 1000      | 2000       |
| **CEN-0301G1-1R8842PE | 42U      | 300+800   | 800       | 2000       |



### Safe & Reliable

- The fully enclosed structure of the cabinet is isolated from the outside world
- Cabinet access control system with high level of protection
- Emergency ventilation, dynamic adjustment and optimization of airflow organization



### Convergence & efficiency

- Innovatively integrated data center infrastructures such as power distribution unit, UPS, rack type AC, emergency cooling system, airflow management, cabling, and intelligent management system into one cabinet



### Quick deployment

- Software and hardware integration, preinstallation, pre-tuning
- Reduce the difficulty of planning and implementing of the data center through standardized design



### Simplified Operation

- Distributed deployment, unified management, unattended
- Support multiple ways of alarm for remote management



Single Cabinets-25U



Dual Cabinets-26U

## PRODUCT DESCRIPTION

DCTC MicroD green smart data room mini data center series It provides you with precision cooling, UPSs, power management, monitoring and control technologies, and fire suppression all in an enclosed system. These systems are quick to deploy compared to conventional data center build, efficient to operate, built for flexibility, and easy to manage.



MINIATURE CIRCUIT BREAKER (MCB)



BATTERY PACK



DATA COLLECTOR



AIR CONDITIONER UNIT



UNINTERRUPTIBLE POWER SUPPLY (UPS)



CODE LOCK



7 INCH TOUCH SCREEN



SMOKE DETECTOR

## FEATURES

- Integrated cabinet module: Fully enclosed, front door hollow tempered glass door, cabinet with hot and cold air circulation, built-in intelligent emergency air supply device, lightening system and local no-load sealed assembly
- refrigeration module: Supports maximum cooling capacity: 4kW
- Uninterruptible power supply module: 3KVA/2.4kW up to 20KVA/16kW
- supports remote centralized management, SMS, and Email alarm function, and achieves 7x24 hours unattended
- Backup time: Equip battery pack or lead-acid battery and battery box (rack) according to actual needs

## MODEL

| Part No.       | Capacity | Width(mm) | Depth(mm) | Height(mm) |
|----------------|----------|-----------|-----------|------------|
| CMD-0304G1-1R6 | 25U      | 600       | 1280      | 2000       |
| CMD-0604G1-2R6 | 65U      | 1200      | 1280      | 2000       |

### Highly shielded

- Effectively suppress computer electromagnetic information leakage and prevent the influence of external strong electromagnetic interference
- Safe and reliable, the whole shielded structure isolating with the outside world

### Green technology

- Consolidate data center infrastructure in single or multiple cabinets to reduce cooling path
- Optimize hot and cold airflow organization, precise cooling, and reduce PUE

### Simplify operation and maintenance

- Distributed deployment, unified management,unattended
- Support multiple ways of alarm for remote management

### Fast Deployment

- Software and hardware integration, factory pre-integrated and pre-tuning
- Fast delivery



## PRODUCT DESCRIPTION

The DTCT CONTAINMENT data center is a new generation of data center deployment based on the cloudy computing. In order to cope with the trend of server development such as cloudy computing, virtualization, centralization, and high density, it adopts a modular design concept to minimize the coupling of infrastructure to the data center environment. Integrated subsystems such as power distribution, refrigeration, cabinets, airflow organization, fast termination cabling, and DCIM to improve the overall operational efficiency of the data center, enabling rapid deployment, flexible expansion, and green energy conservation. All of the infrastructure elements of the DTCT CONTAINMENT data center form a single, enclosed unit that is a complete modular data center, which can be quickly replicated to form a medium, large or super large data center.

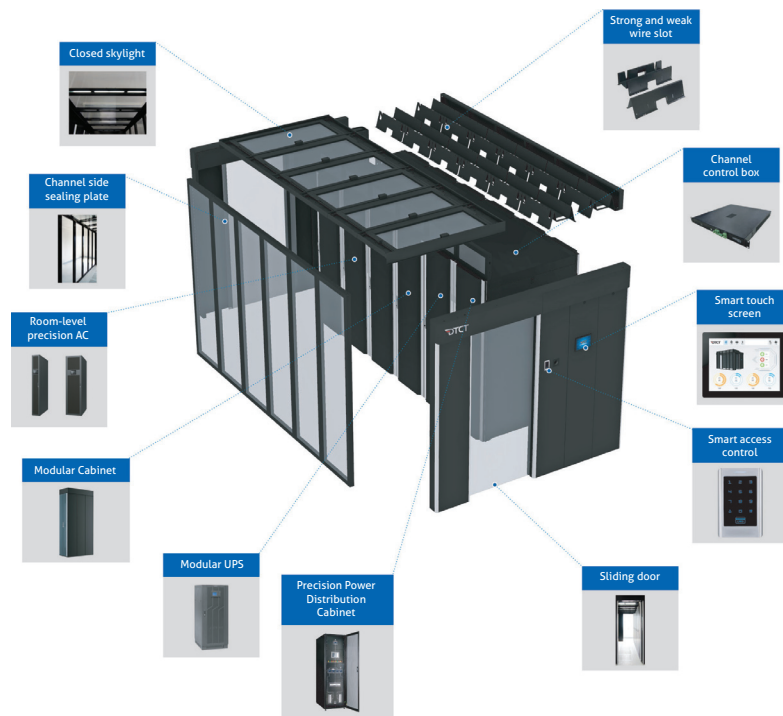
### Single Row Modular Data Center Structural Scene



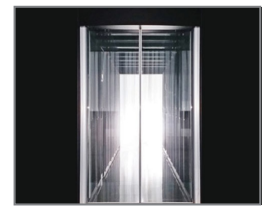
### Dual Row Modular Data Center Structural Scene



## STRUCTURE SCENE



SKYLIGHT ROOF



GLASS DOOR



SMART TOUCH SCREEN



SMART ACCESS CONTROL



MODULAR UPS



WIRE SLOT

## FEATURES

- Modular, standardized and highly reliable design for high system stability
- Design solutions can be provided on the power supply and core cooling equipment configuration according to the actual conditions
- Improve planning and design efficiency, and properly configure system architecture according to IT business needs
- Standardized, modular components, factory assembled and pre-tested to reduce on-site assembly effort
- Realize on-demand deployment of data centers
- For the needs of large IDC construction, easy to quickly expand at any time in the data center
- Integrated modular components such as end cooling, terminal power distribution, and end cabling, on the basis of reducing initial investment, realize on-demand deployment of data centers, avoid idle waste of fixed assets, and ensure optimal infrastructure configuration for IT space in a large data center





Authorized Distributor :



**Head Office**

Jl. RE Martadinata No.12AA, Ancol,  
Pademangan, Jakarta Utara 14430 - Indonesia  
Phone : +6221 690 3311  
Fax : +6221 690 3303  
email : [ampnet@ampnet-online.com](mailto:ampnet@ampnet-online.com)

**Subsidiary Office**

Japfa Indoland Center Japfa Tower II  
Lt. 6, Ruang 603  
Jl. Panglima Sudirman No. 66 - 68  
Surabaya  
Phone : +6231 531 2324  
Fax : +6231 531 2244